

Wellington to Christchurch 16 day Explorer Tour

Explore the cities and scenery from Wellington, then down through the South Island. Highlights includes the Cook Strait ferry between Wellington and Picton; the world renowned TranzAlpine scenic train journey and a cruise on the spectacular Milford Sound in Fiordland.

Starts in: Wellington
Finishes in: Christchurch
Length: 16days / 15nights
Accommodation: Hotel 3 star
Can be customised: Yes

This itinerary can be customised to suit you perfectly. We can add more days, remove days, change accommodations, mix it up, add activities to suit your interests or simply design and create something from scratch. Call us today to get your custom New Zealand itinerary underway.



Inclusions:

Includes: Late model rental cars

Includes: Unlimited kms

Included activity: Private Transfer Wellington Airport to your Accommodation with In Style Executive

Included activity: The Visitor Promise - Cultural Learning Course

Included activity: TranzAlpine Scenic Train: Greymouth to Christchurch

Included activity: Private Transfer from Christchurch Accommodation to Christchurch Airport with Christchurch Touring Company

Included activity: Interislander Ferry Wellington to Picton

Includes: Fully inclusive rental car insurance (excess may apply)

Includes: Afterhours emergency support while touring

Included activity: Electronic Travel Guide and In-Country Support App

Included activity: Milford Sound Cruise with Real NZ - Lunch Included

Included activity: Shared Transfer from Christchurch Train Station to Christchurch CBD Accommodation with Christchurch Touring Company

Included activity: Private transfer from Wellington Hotel to Interislander Ferry with In Style Executive

: 15 breakfasts, 1 lunch

Day 1



Welcome to Wellington

Wellington City is New Zealand's capital. It sits on a wonderful deep natural harbour and is surrounded by bush clad hills. The city centre itself is quite compact (only around 1 square kilometre) and so exploring on foot is relatively easy. From your city centre accommodation you can easily stroll the cafes and restaurants around Courtenay Place and if you arrive early enough New Zealand's national museum, Te Papa, is also close by.

Private Transfer Wellington Airport to your Accommodation with In Style Executive

You will be met on arrival at Wellington airport and transferred to your accommodation.

Your accommodation: Hotel Ibis Wellington

Hotel Ibis Wellington is ideally located in Featherston Street in the heart of Wellington City and easy walking distance to Wellington's famous cafe lifestyle.



Day 2



Private transfer from Wellington Hotel to Interislander Ferry with In Style Executive

You will be collected from your hotel and transferred to the Interislander ferry terminal in time for your ferry check in.

Interislander Ferry Wellington to Picton

The 92 km journey between Wellington and Picton takes around 3 hours and has been described as 'one of the most beautiful ferry rides in the world'. Leaving Wellington Harbour the ferry passes many interesting points such as Pencarrow Head on top of which is New Zealand's oldest lighthouse (1859). Red Rocks is home to a seal colony and Oterangi Bay is the site which recorded the country's highest ever wind speed of 268 kph (167 mph).

From the Cook Strait spectacular views of the Kaikōura Ranges on the South Island can be enjoyed and dolphins and many sea birds are often seen. Around one hour of the cruise takes you through the Marlborough Sounds and this region of bush covered mountains, small islands, crystal clear waters and secluded bays offer remarkable photographic opportunities. The final leg of the cruise travels through Queen Charlotte Sound before coming to an end in the picturesque town of Picton.

SUGGESTED ACTIVITY - Premium Lounge with Interislander

Escape to Interislander's Premium Lounge for sensational views, child-free serenity, and locally sourced food and drink. Interislander's Premium Lounge has enhanced its offering to bring you an elevated travel experience across Cook Strait. Enjoy delicious food and drink, attentive service, and prime positions for appreciating the spectacular views. Whether you're looking to relax or chat with your travel companions, the Premium Lounge provides the ideal space. With varied seating options, you can choose a cosy spot to watch the stunning scenery and taste a selection of seasonal snacks included in your ticket.

Collect Rental Car

This tour's from price includes an intermediate-sized vehicle, setting you up for comfortable travels. Yet, we understand every adventure is unique! Feel free to select the perfect wheels from our incredible collection of rental cars, spanning from economy hatchbacks to premium SUVs.

Your accommodation: Edit Picton

Located in the heart of Picton, only a short walk to the marina, shopping & dining precinct and the ferry terminal. Being in the Marlborough region, it is the gateway to the top of the picturesque South Island and Queen Charlotte Sound.

Meals included: Breakfast



Day 3



Picton to Kaikoura

From Picton head south on State Highway One towards Blenheim, and the wine-producing region of Marlborough. Ideally located to enjoy an afternoon sampling the local produce, stop for a guided wine tour with Full Day Marlborough Wine Tour. Crossing the dry hills of the Marlborough ranges you head towards one of the most spectacular coastlines of the South Island, the Kaikoura Coast. The road hugs the shore for around 50 kilometres and offers many chances to view the native wildlife such as seabirds and New Zealand fur seals. To the east is the Pacific Ocean and to the west you'll follow alongside the Kaikoura Ranges before arriving into the bustling Kaikoura Township.

Kaikōura

Kaikōura is a breathtaking seaside town teeming with marine life and natural beauty. As you wander through this coastal paradise, you'll be enveloped by the fresh sea breeze and the sounds of the ocean. Begin your adventure by observing the lively fur seal colony at the tip of the peninsula. For an unforgettable experience, board a boat to go whale watching and marvel at the majestic whales that call these waters home year-round. If you're feeling adventurous, take the plunge and swim with the playful dusky dolphins in their natural habitat. For bird enthusiasts, Kaikōura offers the chance to get up close with the native albatross, an awe-inspiring sight. The town is rich with attractions, walking tracks, and activities for every visitor. A walk around the Kaikōura Peninsula is a must, where you can explore tide pools teeming with marine life, observe sea creatures basking on the rocks, and watch seabirds soaring above. Be sure to keep a respectful distance from the sleeping sea lions you might encounter along the way. Ohau Point is another highlight, where you can watch fur seals frolic in their natural environment. To delve into Kaikōura's fascinating history, visit Fyffe House. This historic whaler's cottage offers a glimpse into the town's whaling past and its evolution over the years. No trip to Kaikōura is complete without sampling the local seafood. Renowned for having some of the best fish and chips in the country, Kaikōura's eateries serve fresh catches straight from the morning's haul, ensuring a delicious and authentic dining experience. If you need a break from the action, unwind at Lavendyl Lavender Farm. Stroll through the fragrant lavender fields, relax in the serene atmosphere, and browse the gift shop for a variety of lavender products. Kaikōura seamlessly blends adventure, history, and relaxation, making it a perfect destination for travellers seeking a unique and enriching experience.

SUGGESTED ACTIVITY - Seafood Odyssey Cruise with Marlborough Tour Company

Enjoy the sights and sounds of the Queen Charlotte Sound with seemingly endless bays and coves to explore and different scenery around each corner. Seafood Odyssey Cruise offers a unique range of sightseeing, birdlife and wildlife. Learn about the Marlborough Sounds area, the local seafoods grown and enjoy a fabulous seafood tasting on board matched to stunning Marlborough Sauvignon Blanc.

SUGGESTED ACTIVITY - Zipline & Native Forest Tour with EcoZip Kaikoura

Enjoy a scenic journey to Kaikōura's beachfront airfield, followed by a 4WD adventure crossing the braided Kahutara River to Rakanui Station. Take in panoramic views of rolling farmland, lush valleys, and snowcapped mountains before embarking on an exhilarating 5-zipline course, including twin lines for side-by-side rides. Learn fascinating local history from expert guides and enjoy a walk through native forest, with a chance to plant a tree during winter as part of Eco Zip's conservation program. An unforgettable eco-adventure awaits! It is important you read and understand the risks associated with this activity before travel. For more information, please see [here](#)

Your accommodation: Sudima Hotel Kaikōura

This state-of-the-art waterfront hotel in Kaikōura has a 4.5 star rating with an outstanding in-house restaurant, a bar and conference facilities.

Meals included: Breakfast



Day 4



SUGGESTED ACTIVITY - Ocean's Cabin with Whale Watch Kaikōura

Experience New Zealand's only marine-based whale-watching company. Whale Watch Kaikōura offers a once-in-a-lifetime, up-close encounter with the giant Sperm Whale. You are also likely to encounter New Zealand fur seals, dolphins, and albatross. Depending on the season you may also see Pilot, Blue, and Southern Right whales as well as migrating humpbacks. Often orcas can be spotted here and the world's smallest dolphin, the Hector's, occasionally makes an appearance.

Kaikōura to Christchurch

Travel down the coast before heading inland through the North Canterbury wine region - the Waipara Valley. If you've time on your hands we recommend taking a detour to Hanmer Springs for relaxing dip in its thermal pools. Arriving into Christchurch you'll see a new and improved city, steadily rising from the ruins of the 2011 and 2010 earthquakes.

Your accommodation: Scenic Hotel Cotswold

The Scenic Hotel Cotswold is just a few minutes walk to boutique shopping at Merivale and Hagley Park. The distinctive architecture of the Scenic Hotel Cotswold reflects Christchurch's image as the most English of cities outside of England.

Meals included: Breakfast



Day 5



Explore Christchurch

Following earthquakes that razed its centre and much of the outlying suburbs, Ōtautahi-Christchurch is well into a billion-dollar makeover. In the middle of the Canterbury Plains, bordering the Pacific Ocean, New Zealand's newest city is an ideal gateway to exploring the middle of the South. Go punting on the Avon River, take a historic tram ride, catch the gondola to the rim of an extinct volcano or do all three! See the world's only Cardboard Cathedral and for nature enthusiasts - wander the renowned Christchurch Botanic Gardens, or head to Oxford Terrace in the city to find a great spot to eat or drink. Drive an hour in any direction to ski, mountain bike, wine taste, whale-watch, bungee jump or play golf. Take the winding Port Hills road to the French settlement of Akaroa & Banks Peninsula and tour the vines in Waipara for an authentic New Zealand wine-tasting experience.

SUGGESTED ACTIVITY - Christchurch Triple Pass - Tram, Punting and Gondola

Experience three of Christchurch's iconic attractions in one day: the Christchurch Tram, Christchurch Gondola, and Punting on the Avon River. The historic tram is a delightful way to explore the evolving inner city, taking in the various sights with the hop-on hop-off pass and learning about the city from the live commentary. You'll also enjoy a bird's eye view of Christchurch and the Canterbury region including the distant peaks of the Southern Alps when you ride the gondola cableway to the top of the Port Hills in Heathcote Valley. Punting on the Avon River takes you through the city's green belt: a relaxing way to explore what is affectionately known as the 'Garden City'.

Your accommodation: Scenic Hotel Cotswold

The Scenic Hotel Cotswold is just a few minutes walk to boutique shopping at Merivale and Hagley Park. The distinctive architecture of the Scenic Hotel Cotswold reflects Christchurch's image as the most English of cities outside of England.

Meals included: Breakfast



Day 6



Christchurch to Aoraki-Mt Cook National Park

Drive through the heart of the South Island, crossing the vast Canterbury plains. Catch your breath in Geraldine before continuing through Fairlie. Ascending Burkes pass you'll come to the picturesque town of Lake Tekapo. Follow the road and take in the view of Aoraki-Mt Cook (New Zealand's tallest mountain) from the shores of Lake Pukaki, known for its glacier fed turquoise blue colour. Continue along the lake to your final destination Aoraki-Mt Cook Village.

SUGGESTED ACTIVITY - Glacier Explorers

Experience 500-year-old icebergs up close on the Aoraki-Mt Cook terminal lake. The Glacier Explorers tour is the only one of its kind in New Zealand and one of only three in the world! Very few glaciers terminate into lakes and even fewer of them are accessible. See towering ice cliffs and floating icebergs from the safety of a specially designed boat. These boats provide a safe way to view unseen and inaccessible areas of New Zealand's largest glacier The Tasman.

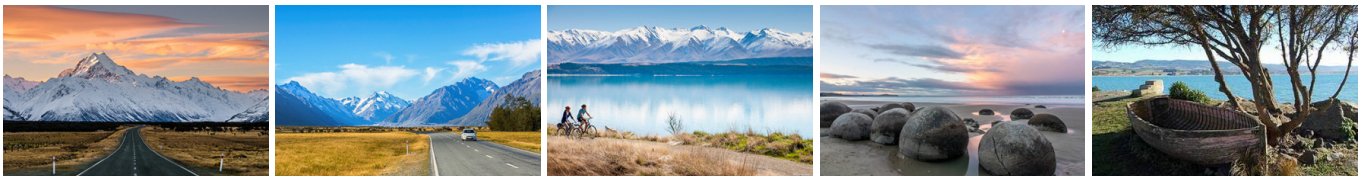
Your accommodation: Hermitage Hotel Room Mount Cook View

The Hermitage Hotel ringed by magnificent snow-capped peaks of the Southern Alps, is a world-renowned tourist destination and has been an icon of superior accommodation and dining since 1884.

Meals included: Breakfast



Day 7



Aoraki Mt Cook National Park to Dunedin

Leave Aoraki Mt Cook National Park and travel past Twizel, one of the locations for the Lord of the Rings films. Go through Omarama, the gliding capital of New Zealand. Continue down the Waitaki Valley follow the hydro power generating system to the rural town of Kurow, home to the divine Valli Wines. Stop for a sip or continue on to the east coast. Stretch your legs in Oamaru, known for its white stone buildings constructed with the local Oamaru Stone and Steampunk influence. If you were a little late off the mark this morning you may get the chance to see the blue penguins come ashore at dusk. Continue south down the coast to Moeraki, and take a detour towards the beach to see the Moeraki Boulders, a unique geological feature well worth a look. As you arrive in Dunedin, take in the city's Edwardian and Scottish heritage reflected in the buildings around the city centre The Octagon.

Your accommodation: Kingsgate Hotel Dunedin

Located right in the heart of the city, Kingsgate Hotel Dunedin has the CBD right at its doorstep. The Otago Museum is just a stroll away, while the beach is a mere 10-minute drive. This hotel boasts sunny north-facing guest rooms, brimming with amenities. All rooms feature balconies, an excellent vantage point to view the city.

Meals included: Breakfast



Day 8



Explore Dunedin and the Otago Peninsula

Known as the Edinburgh of the South, Dunedin City has a heavy Scottish influence. Surrounded by rugged coastal plains and windswept beaches it's home to an eclectic mix of historical and modern architecture as well as industrial technology. Renowned for its Flemish Baroque-inspired 'gingerbread house' Railway Station, this university town is bustling with life. Head to the Saturday farmers market held in the aforementioned railway grounds for a taste of organic produce, handmade crepes and local honey. Explore the many cafes and wine bars in The Octagon, then continue on a self-guided walking tour of the internationally acclaimed Street Art dotted around the city. Drive to the coast and watch the freighters passing in the distance while you sunbathe, or hire a mountain bike and test your legs on one of the many trails available in the area. For a more immersive historical experience, follow the coast to New Zealand's only castle, Larnach Castle. On your way back be sure to head to the Otago Peninsula to see the largest mainland Albatross colony in the world.

SUGGESTED ACTIVITY - Wildlife Peninsula Encounter Tour and Wildlife Cruise with Monarch

Join a small-group bus tour led by a local guide across the Otago Peninsula, featuring stunning harbour views, rural landscapes, and unique wildlife. Visit a remote beach to spot sea lions, take a Monarch Wildlife Cruise to see albatross, seals, and rare seabirds, and explore a Yellow-eyed Penguin conservation reserve with hidden viewing hides. This unforgettable journey blends breathtaking scenery with intimate wildlife encounters before a relaxed return to Dunedin.

SUGGESTED ACTIVITY - Larnach Castle and Gardens

Larnach Castle, New Zealand's only castle, was built in 1871 by politician and merchant William Larnach, a visionary who played a key role in shaping the country's early history. Constructed for his beloved first wife, Eliza, the castle's shell took 200 workmen three years to complete, followed by twelve years of intricate interior craftsmanship. Perched high on the Otago Peninsula, the castle offers stunning views over Dunedin City. Its gardens hold International Garden of Significance status and feature a unique collection of antiques, including a rare nine-piece Totara knot suite. The Ballroom Café provides the perfect spot to relax and enjoy refreshments while reflecting on your visit. The ballroom itself has a fascinating history, having once served as an asylum, an antique sales room, and even a sheep pen before its beautiful restoration. With a self-guided tour, you can explore the castle and gardens at your own pace.

Your accommodation: Kingsgate Hotel Dunedin

Located right in the heart of the city, Kingsgate Hotel Dunedin has the CBD right at its doorstep. The Otago Museum is just a stroll away, while the beach is a mere 10-minute drive. This hotel boasts sunny north-facing guest rooms, brimming with amenities. All rooms feature balconies, an excellent vantage point to view the city.

Meals included: Breakfast



Day 9



Dunedin to Te Anau (via Invercargill)

The drive to Te Anau takes you through classic Southland farming scenery. Head off-the-beaten-track today and follow the coastline instead of the inland route. Go through The Catlins area and be sure to take a detour to Kaka Point to view its majestic cliffs and pounding surf. If time permits, keep driving towards Nugget Point, iconic for its steep headland with a lighthouse perched atop. Continue through Invercargill to Riverton and Colac Bay, and then head north to Manapouri. From here you can embark on a day or overnight cruise to the remote Doubtful Sound, renowned for its natural beauty. Just a short way further will bring you to your lakeside destination of Te Anau, gateway to Fiordland National Park and Milford Sound.

SUGGESTED ACTIVITY - Te Anau Glowworm Caves with RealNZ

Begin your Te Anau Glowworm experience with a scenic cruise across Lake Te Anau on board the luxury catamaran, Luminosa, to the western side of the lake. On arrival, you'll enter the caves through Cavern House, where informative displays detail the history of this 12,000 year old underground network. You'll then explore by limestone pathway while your guide points out hidden whirlpools, sculpted rock formations, and a rushing underground waterfall. See a magical display of thousands of glowworms as you glide through the darkness in a small boat.

Your accommodation: Distinction Luxmore Hotel

The perfect base for all your Fiordland travel, Distinction Luxmore Hotel provides comfortable accommodation right in the heart of Te Anau.

Meals included: Breakfast



Day 10



Te Anau to Milford Sound, returning to Te Anau

The magnificent Milford Road leading to Milford Sound offers some of the most beautiful and iconic scenery in the country. Countless photo opportunities mean this drive should not be rushed. From crystal clear lakes and towering mountains to lush glacier-formed meadows, this area is abundant with picture-perfect scenes. Continue on through the Homer Tunnel, an engineering marvel at 1219 meters long. Arriving in the village of Milford, you will be greeted with an amazing view of Mitre Peak. A day cruise into the heart of the sound is not to be missed. You'll learn about how this magnificent area was formed and experience the wonder of the falls that line the Fjord before back-tracking the way you came.

Milford Sound Cruise with Real NZ - Lunch Included

Get up close and personal with Milford Sound on a leisurely cruise of this spectacular fiord. From thundering waterfalls to sky-high mountains to lush rainforests, Milford has it all. Experience the spray of a waterfall as you cruise close to sheer rock faces. Informative, participative and relaxed, this is the perfect way to experience Milford Sound to the fullest.

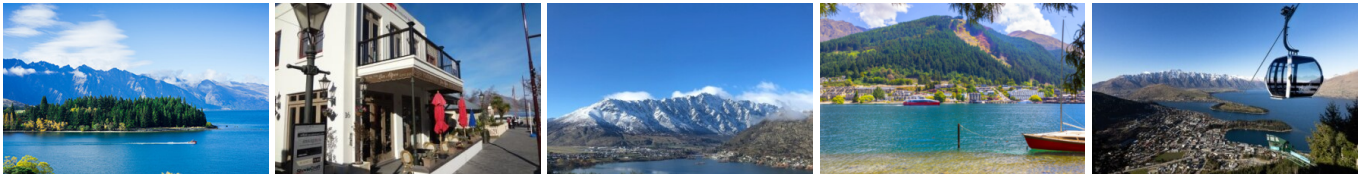
Your accommodation: Distinction Luxmore Hotel

The perfect base for all your Fiordland travel, Distinction Luxmore Hotel provides comfortable accommodation right in the heart of Te Anau.

Meals included: Breakfast, Lunch



Day 11



Te Anau to Queenstown

Journey across expansive tussock lands en route to Queenstown. Pass through Mossburn, renowned as the deer capital of New Zealand, and continue through the picturesque Southland countryside. As the road begins to trace the edge of Lake Wakatipu, marvel at the breathtaking views from the Devil's Staircase. Finally, approach Queenstown, the adventure capital of New Zealand, with the Remarkables mountain range standing majestically in the backdrop.

Your accommodation: Ramada Hotel & Suites Queenstown Central

Ramada Hotel & Suites offers well-appointed apartment-style rooms located in the heart of Queenstown. Experience tranquillity all year round, overlooking the shores of Lake Wakatipu and within walking distance of Queenstown's central shopping and entertainment area.

Meals included: Breakfast



Day 12



Explore Queenstown

Well-known as New Zealand's 'adventure capital', Queenstown is home to a range of adventures, from the world's first and most famous bungy jumps to jet boat thrills, white-water rafting, and skydiving. However, Queenstown offers far more than a fast-paced, action-packed holiday. Settled on the shores of beautiful Lake Wakatipu beneath a soaring panorama of the Remarkables Mountain Range, this alpine town is surrounded by many historic, gastronomic, and scenic wonders. Take a stroll through the beautiful lakefront parks and gardens, browse through market stalls on weekends, dine in wonderful al-fresco restaurants, or ride on the 100-year-old historic Steamship - TSS Earnslaw to Walter Peak Station. Take the Queenstown Gondola up to Bob's Peak and soak up the panoramic views of the magnificent lake and mountain ranges. And after all of that, if you do want the adrenaline rush, Queenstown is known for taking your pick from the Shotover Jet, Canyon Swing, Zipline, Luge, or Heli-hike.

SUGGESTED ACTIVITY - Wilderness Jet Experience with Dart River Safaris

Journey deep into the heart of the world-renowned Mt Aspiring National Park, where myth, heritage, and fantasy come to life. As one of Queenstown's most exhilarating activities, the Wilderness Jet adventures on a spectacular journey deep into the heart of the world-renowned Mount Aspiring National Park. It is important you read and understand the risks associated with this activity. For more information please see here.

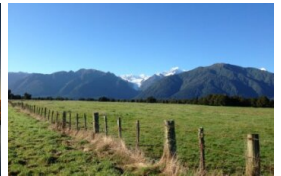
Your accommodation: Ramada Hotel & Suites Queenstown Central

Ramada Hotel & Suites offers well-appointed apartment-style rooms located in the heart of Queenstown. Experience tranquillity all year round, overlooking the shores of Lake Wakatipu and within walking distance of Queenstown's central shopping and entertainment area.

Meals included: Breakfast



Day 13



Queenstown to Fox Glacier

Crossing the Crown Range the highest sealed road in the country, you'll pass through the alpine town of Wanaka. Following the shores of both Lake Wanaka and Hawea, you'll enter the township of Makarora, the gateway to Mt. Aspiring National Park. Stretch your legs on a walk to Blue Pools, a ten-minute stroll through lush rainforest. Marvel at the native beech and countless waterfalls as you continue toward the West Coast.

Crossing the Haast River you are now truly in the Wild West, a 600-kilometre stretch of bush, rainforest and podocarp forest. Continue to arrive at Fox Glacier, your destination for the night. Home to the largest glacier on the west coast, Fox is 13 kilometres long and ends in rainforest only 250 metres above sea level.

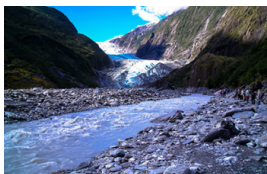
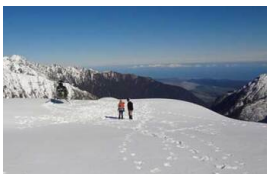
Your accommodation: Heartland Hotel Glacier Country

Heartland Hotel Glacier Country is located right in the centre of Fox Glacier township, putting you in easy reach of the unique experiences available within Westland National Park.

Meals included: Breakfast



Day 14



Fox Glacier

The mighty Fox Glacier is the largest and longest of the stunning West Coast glaciers. Remarkably, it ends in a temperate rainforest just 250 metres above sea level, only twelve kilometres from the sea. The valley at the glacier's head boasts more peaks than any other in New Zealand. Like all glaciers, the Fox Glacier advances and retreats, with its latest surge evident in the bulging lower ice fall. Alpine Guides offers access to the lower part of the glacier via a hidden track that winds through regenerating native forest, providing stunning views of the glacier's upper reaches. Fox Glacier Township, often described as the more "laid-back" of the twin Glacier Country townships, is celebrated for its relaxed atmosphere, excellent cafés, and a variety of accommodation options. The township also enjoys breathtaking views of New Zealand's tallest peaks, Mount Cook and Mount Tasman. For an unforgettable experience, take a helicopter ride to admire the glacier from above or opt for a heli hike to get up close to its icy formations. Nearby, Lake Matheson, renowned for its mirror-like reflections, is just a five-minute drive west of Fox Township. A short 25-minute drive further west takes you to historic Gillespie's Beach, famous for its crashing surf and views of distant snow-capped mountains.

SUGGESTED ACTIVITY - Half Day Lake Matheson Eco Tour

Nature has combined three ingredients to create the stunning vista of Lake Matheson. Explore the crystal clear waters and learn about the flora, fauna, glaciation, geology, and natural history of this beautiful area. Enjoy the stunning Lake Matheson, where you'll walk the 3km gentle track that follows the lake edge. Along the way, you'll take in the reflective qualities of the lake and the surrounding lush rainforest, which make for fantastic photo opportunities.

SUGGESTED ACTIVITY - Twin Glacier Scenic Helicopter Flight with The Helicopter Line

Experience the breathtaking beauty of not one, but two spectacular glaciers—Fox Glacier and Franz Josef Glacier. Get up close to their stunning neve and intricate ice formations, with a snowfield landing that's sure to be a highlight of your journey. Capture incredible photos, make a snowball, and create unforgettable memories during this 30-minute scenic flight with a snow landing. If weather conditions prevent your flight, your booking can be easily transferred to a similar tour with The Helicopter Line in Queenstown or Mt Cook. It is important to read and understand the risks associated with this activity. A full risk disclosure can be found here.

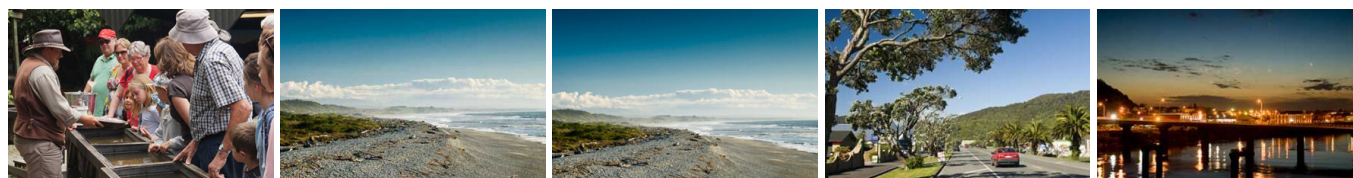
Your accommodation: Heartland Hotel Glacier Country

Heartland Hotel Glacier Country is located right in the centre of Fox Glacier township, putting you in easy reach of the unique experiences available within Westland National Park.

Meals included: Breakfast



Day 15



Fox Glacier to Greymouth Train Station (Return Rental Car)

The drive north from Fox and Franz Josef takes you through the historic gold mining region of Ross and the town of Hokitika, a great place to explore the craft stores, in particular the jade or greenstone. The largest town on the West Coast, Greymouth is also the starting point for the TranzAlpine Scenic Train. Drop your rental car at the Greymouth Train Station depot located inside the train station building and board the TranzAlpine train.

TranzAlpine Scenic Train: Greymouth to Christchurch

Considered one of the world's great train journeys, the TranzAlpine Scenic Train takes you from Greymouth to Christchurch. Travel across the South Island from the west to the east coast through Arthur's Pass National Park. From the comfort of your carriage see lush beech forest, deep river valleys and the spectacular peaks of the Southern Alps. Descend to the windswept Canterbury Plains before arriving in the city of Christchurch.

Shared Transfer from Christchurch Train Station to Christchurch CBD Accommodation with Christchurch Touring Company

On arrival at the Christchurch railway station, you will be met by a driver and transferred to your Christchurch accommodation.

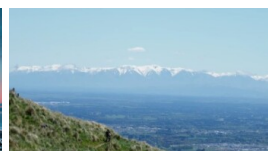
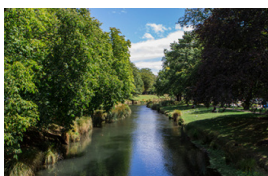
Your accommodation: Scenic Hotel Cotswold

The Scenic Hotel Cotswold is just a few minutes walk to boutique shopping at Merivale and Hagley Park. The distinctive architecture of the Scenic Hotel Cotswold reflects Christchurch's image as the most English of cities outside of England.

Meals included: Breakfast



Day 16



Private Transfer from Christchurch Accommodation to Christchurch Airport with Christchurch Touring Company

A private transfer will collect you from your accommodation and transfer you to Christchurch Airport in time for your departing flight.

Farewell from Aotearoa-New Zealand

Bid farewell to Aotearoa-New Zealand, taking with you unforgettable memories of its breathtaking landscapes and incredible adventures. In Maori, it is said mā te wā, which is not goodbye, it is see you soon!

Tour details

Departures:	Daily
Tour type:	Nationwide Self Drive
Starts:	Wellington
Finishes:	Christchurch
Tour length:	16
Accommodation:	Hotel 3 star
Car/transport type:	

Included activities

Includes	15 breakfasts
Includes	Private train station transfers
Includes	Private airport transfers
Includes	TranzAlpine Train from Greymouth to Christchurch
Includes	Interislander ferry crossing
Includes	Real Journeys Milford Sound Cruise

Accommodation summary

Day 1	Hotel Ibis Wellington
Day 2	Edit Picton
Day 3	Sudima Hotel Kaikōura
Day 4	Scenic Hotel Cotswold
Day 5	Scenic Hotel Cotswold
Day 6	Hermitage Hotel Room Mount Cook View
Day 7	Kingsgate Hotel Dunedin
Day 8	Kingsgate Hotel Dunedin
Day 9	Distinction Luxmore Hotel
Day 10	Distinction Luxmore Hotel
Day 11	Ramada Hotel & Suites Queenstown Central
Day 12	Ramada Hotel & Suites Queenstown Central
Day 13	Heartland Hotel Glacier Country
Day 14	Heartland Hotel Glacier Country
Day 15	Scenic Hotel Cotswold