

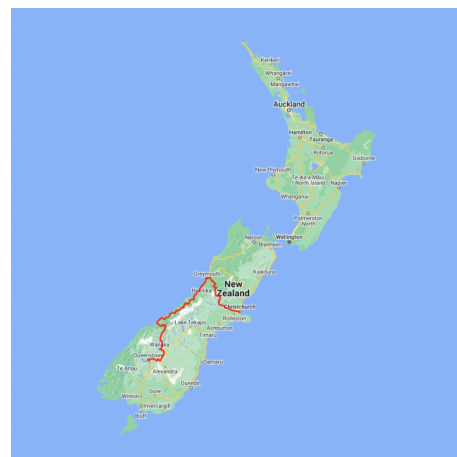


TranzAlpine, West Coast Glaciers, and Queenstown Short Break

Departing from Christchurch, you'll cross the Southern Alps aboard the world-famous TranzAlpine Scenic Train. On reaching the ruggedly beautiful West Coast you'll follow the coastline south to Franz Josef, where you'll spend the next 2 nights. From your base in Franz Josef you'll have time to explore the pristine wilderness of Westland Tai Poutini National Park, the lush forests, and the stunning glaciers of the area. On day three, you'll depart the glacier region and continue south through the stunning Haast Pass to the Southern Lakes region, eventually concluding your journey in the 'Adventure Capital of the World' Queenstown.

Starts in: Christchurch
Finishes in: Queenstown
Length: 3days / 2nights
Accommodation: Motels
Can be customised: Yes

This itinerary can be customised to suit you perfectly. We can add more days, remove days, change accommodations, mix it up, add activities to suit your interests or simply design and create something from scratch. Call us today to get your custom New Zealand itinerary underway.



Inclusions:

- Includes: All coach transport
- Includes: All pick ups/drop offs at destinations
- Includes: Afterhours emergency support while touring
- Included activity: TranzAlpine Scenic Train: Christchurch to Greymouth
- Included activity: Greymouth Train Station to Franz Josef with Gray Line / GreatSights
- Included activity: The Visitor Promise - Cultural Learning Course
- Included activity: Franz Josef to Queenstown Day Tour with Gray Line / GreatSights

Day 1



TranzAlpine Scenic Train: Christchurch to Greymouth

The early morning departure is rewarded with incredible scenery today onboard the TranzAlpine Scenic Train. Considered one of the world's great train journeys, it travels between the East Coast, Christchurch and the West Coast, Greymouth. From your carriage, you'll see the fields of the Canterbury Plains and farmland, followed by the spectacular gorges and river valleys of the Waimakariri River. The train then climbs into the Southern Alps passing through small settlements and Arthur's Pass National Park before descending through the lush beech rain forest to the West Coast town of Greymouth, a great base for visits to Punakaiki and the West Coast glaciers.

Greymouth Train Station to Franz Josef with Gray Line / GreatSights

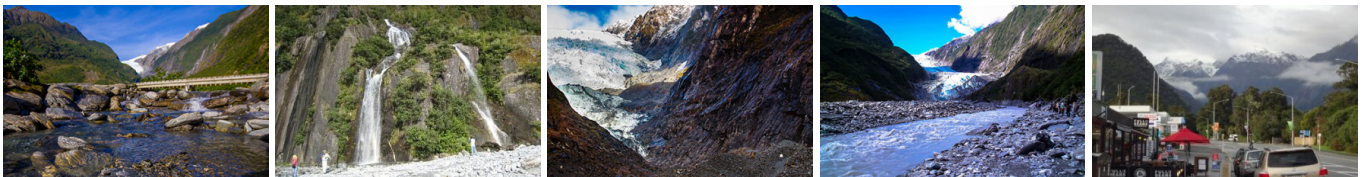
Your coach to Franz Josef Glacier departs from the Greymouth Railway Station. The journey to the Glaciers is southward through the lush bush covered landscape at the base of the Southern Alps. A refreshment stop in Hokitika allows you to stretch your legs around the town centre. Further south you pass through the township of Ross which was the centre of one of New Zealand's richest alluvial goldfields in the late 1800s. Further along, travelling down the West Coast enjoy the beautiful landscape of vast rainforests, gushing waterfalls and snow-capped mountains before arriving into the small village of Franz Josef. From here you can explore the world famous Franz Josef Glacier.

Your accommodation: Punga Grove Motel & Suites

Punga Grove is right in the heart of Franz Josef Glacier village stylish accommodation in a beautiful rainforest setting.



Day 2



Explore Franz Josef

Franz Josef is a small yet lively town in the heart of New Zealand's West Coast, best known for its spectacular 12 km-long glacier. The township is surrounded by lush, rainforest-clad mountains and has a vibrant atmosphere with plenty to explore. A variety of scenic walking trails offer incredible views of the glacier, but for a truly up-close experience, a licensed helicopter tour is the only way to set foot on the ice. Beyond the glacier, unwind in the rejuvenating Hot Pools or visit the West Coast Wildlife Centre to spot rare kiwi birds. If you're in the mood for a more relaxed day, the township is home to charming souvenir and gift shops, as well as great dining spots like SnakeBite Brewery and King Tiger. Whether you're chasing adventure or relaxation, Franz Josef is a stunning blend of wild beauty and welcoming hospitality.

SUGGESTED ACTIVITY - Twin Glacier Scenic Helicopter Flight with The Helicopter Line

A spectacular scenic flight soaring over two of New Zealand's most famous glaciers, Fox and Franz Josef. Landing at the head of one and view the incredible sight of this frozen river as it winds its way through ancient carved valleys. It is important to read and understand the risks associated with this activity. A full risk disclosure can be found [here](#).

SUGGESTED ACTIVITY - Franz Josef Nature Tour with Glacier Valley Eco Tours

Nestled in thick historic West Coast forest and a stone's throw from wild black sand beaches, this is one of the world's most unusual glaciers. Beautiful blue skies or magical misty rain, whatever the weather - you will feel like you are in Narnia or LOTR.

With easy walking at your pace, information on glaciology, geology, geomorphology, flora and fauna, local legends, history, and small guided groups with fantastic guides, you will experience this glacier in style and in the best hands with the only local company. Wander past glacier rivers and streams and through beautiful podocarp forest; discover hidden natural treasures such as native snails, wild native mushrooms, and dozens of species of native orchids; listen to native bird song and waterfalls; see if you can spot a Chamois or a Tahr on the huge snow-capped mountains above while drinking a cup of tea and talking one-on-one with your guide.

Your accommodation: Punga Grove Motel & Suites

Punga Grove is right in the heart of Franz Josef Glacier village stylish accommodation in a beautiful rainforest setting.



Day 3



Franz Josef to Queenstown Day Tour with Gray Line / GreatSights

Travel from the isolated beauty of Franz Josef to the exciting resort town of Queenstown.

Leave the small village of Franz Josef, access point to the world famous Franz Josef Glacier, and journey through the remote and rugged landscape of the West Coast. This is New Zealand at its purest and most untamed, see moody mountain ranges, thick native rainforest and wild rocky shores as you travel in comfort. Cross over to the East Coast through the Haast Pass, the southernmost pass in the Southern Alps. On the other side, enjoy picture-postcard views of vibrant blue lakes like Lake Hawea, Lake Wanaka and Lake Dunstan as you make your way into scenic Queenstown, arriving in the late afternoon.

Tour details

Departures:	Daily
Tour type:	Independant Bus & Coach
Starts:	Christchurch
Finishes:	Queenstown
Tour length:	3
Accommodation:	Motels
Car/transport type:	

Accommodation summary

Day 1	Punga Grove Motel & Suites
Day 2	Punga Grove Motel & Suites