

The Essential South Island

Discover the South Island's wonders, starting in vibrant Christchurch before heading to Aoraki/Mt Cook for a glacial adventure. Explore Queenstown and cruise on the TSS Earnslaw, then journey to the awe-inspiring Doubtful Sound. Visit the breathtaking Franz Josef Glacier and conclude your trip with the iconic TransAlpine scenic train back to Christchurch.

Starts in: Christchurch
Finishes in: Christchurch
Length: 9days / 8nights
Accommodation: Boutique Lodges & Hotels
Can be customised: Yes

This itinerary can be customised to suit you perfectly. We can add more days, remove days, change accommodations, mix it up, add activities to suit your interests or simply design and create something from scratch. Call us today to get your custom New Zealand itinerary underway.



Inclusions:

Includes: Late model rental cars

Includes: Unlimited kms

Included activity: Private Transfer Christchurch International Airport to Christchurch

Accommodation

Included activity: The Visitor Promise - Cultural Learning Course

Included activity: Sir Edmund Hillary Alpine Centre Museum and Theatre Explorer Pass with Hermitage

Included activity: Gondola Ride with Skyline Queenstown

Included activity: Franz Josef Glacier Helihike with Franz Josef Glacier Guides

Included activity: Shared Transfer from Christchurch Train Station to Christchurch CBD Accommodation with Christchurch Touring Company

: 8 breakfasts, 1 lunch, 1 special dinner

Includes: Fully inclusive rental car insurance (excess may apply)

Includes: Afterhours emergency support while touring

Included activity: Electronic Travel Guide and In-Country Support App

Included activity: Glacier Explorers

Included activity: TSS Earnslaw Cruise and Walter Peak Gourmet BBQ Dinner

Included activity: Doubtful Sound Wilderness Cruise from Queenstown with RealNZ

Included activity: TransAlpine Scenic Train: Greymouth to Christchurch

Included activity: Private Transfer from Christchurch Accommodation to Christchurch International Airport with Christchurch Touring Company

Day 1



Private Transfer Christchurch International Airport to Christchurch Accommodation

On arrival, you will be met by a private driver and transferred to your Christchurch accommodation.

Welcome to Christchurch City

Christchurch New Zealand's garden city is steadily being transformed into a vibrant urban destination. Encompassing a large green belt, it is known for its wide tree lined avenues and lush gardens. A great way to explore the city or easy way to see the sights or ride the historic trams across town to the renowned botanic gardens and the unique cardboard Transitional Cathedral, that's right it is built of cardboard!

SUGGESTED ACTIVITY - Kai Safari with Amiki Cultural Food Tours

Immerse yourself in the vibrant atmosphere of the new city while exploring its emerging foodie scene. Learn about the lives of early Māori and their contemporary lifestyle. Uncover hidden gems and hear stories of how Ōtautahi-Christchurch envisions the future. Enjoy visits to beloved modern New Zealand restaurants, where you can sample seasonal shared plates made from local produce. Indulge in new favourite dishes, savouring a variety of local food and beverages, each with its own unique story that highlights the region's offerings..

Your accommodation: Merivale Manor House

Originally built in the 1880's, Merivale Manor has been transformed into elegant motel and apartment accommodation. Less than 200 metres to central Merivale with its premier shopping, restaurants, cafes and bars.



Day 2



Collect Rental Car

This tour's from price includes an intermediate-sized vehicle, setting you up for comfortable travels. Yet, we understand every adventure is unique! Feel free to select the perfect wheels from our incredible collection of rental cars, spanning from economy hatchbacks to premium SUVs.

Christchurch to Aoraki-Mt Cook National Park

Drive through the heart of the South Island, crossing the vast Canterbury plains. Catch your breath in Geraldine before continuing through Fairlie. Ascending Burkes pass you'll come to the picturesque town of Lake Tekapo. Follow the road and take in the view of Aoraki-Mt Cook (New Zealand's tallest mountain) from the shores of Lake Pukaki, known for its glacier fed turquoise blue colour. Continue along the lake to your final destination Aoraki-Mt Cook Village.

Glacier Explorers

Experience 500-year-old icebergs up close on the Aoraki-Mt Cook terminal lake. The Glacier Explorers tour is the only one of its kind in New Zealand and one of only three in the world! Very few glaciers terminate into lakes and even fewer of them are accessible. See towering ice cliffs and floating icebergs from the safety of a specially designed boat. These boats provide a safe way to view unseen and inaccessible areas of New Zealand's largest glacier The Tasman.

Sir Edmund Hillary Alpine Centre Museum and Theatre Explorer Pass with Hermitage

A tribute to New Zealand's Sir Edmund Hillary, a humanitarian, ambassador, and one of the world's greatest explorers. The centre showcases the Aoraki Mount Cook region, the history of climbing, and early transport used throughout the region. This comprehensive museum details the life of Sir Edmund Hillary, the Hermitage, and provides access to the 126-seat custom-designed theatre. Check out the daily film schedule which includes 3D Movies, documentaries, and 360-degree digital dome features.

Your accommodation: Hermitage Hotel, Aoraki Wing Premium Plus

Experience the best views in the park from the spacious top floor rooms of the magnificent Hermitage Hotel.

Meals included: Breakfast



Day 3



Aoraki Mt Cook National Park to Queenstown

Leaving the alpine region of Aoraki Mt Cook, you'll travel through the lakeside town of Twizel, then a little further to Omarama the gliding capital of New Zealand. Continue on over the Lindis Pass, one of New Zealand's highest roads with a summit of 971 metres. Arrive in the quaint village of Tarras, then continue on a short way to the historic Bendigo Reserve, one of Otago's original gold mining settlements. Follow the road to Cromwell, and keep going through the sheer cliffs of the Kawarau Gorge towards Gibbston, one of New Zealand's premier wine growing regions. See the historic Kawarau Bridge where you can bungee jump or relax and watch others take the plunge. Approaching Queenstown, the Remarkables mountain range comes into view as you arrive into the adventure capital of New Zealand.

TSS Earnslaw Cruise and Walter Peak Gourmet BBQ Dinner

Enjoy a quintessential Kiwi experience, a delicious gourmet BBQ buffet meal, and a farm demonstration in a stunning lakeside setting. Take in the stunning views of Lake Wakatipu and its surroundings as you cruise across the lake to the historic Walter Peak high country farm aboard the TSS Earnslaw Steamship. Enjoy the ambiance of the heart of the stately homestead while your Colonel's Homestead Restaurant chef prepares a gourmet BBQ dinner. Your seasonal menu includes an extensive selection of local New Zealand produce, including succulent meats and a selection of delicious vegetables and salads. Complete your meal with your choice of delicious desserts, or New Zealand cheeses. After dinner, watch the farm dogs in action with a sheep-herding demonstration and say hello to the other farm animals. Finally, cruise home under the southern stars and enjoy the fresh night air as the lights of Queenstown draw ever closer.

Your accommodation: The Dairy Hotel Queenstown, A Naumi Chapter

The Dairy Private Hotel – a unique blend of exquisite design, rich history and warm hospitality in the city centre. Beginning as Queenstown's original 'dairy' (corner store) in 1920, it has now transformed into an interiors masterpiece after an exquisite refurbishment that features wallpapers from British luxury interiors brand House of Hackney.

Meals included: Breakfast, Speciality Dinner



Day 4



Explore Queenstown

Well-known as New Zealand's 'adventure capital', Queenstown is home to a range of adventures, from the world's first and most famous bungee jumps to jet boat thrills, white-water rafting, and skydiving. However, Queenstown offers far more than a fast-paced, action-packed holiday. Settled on the shores of beautiful Lake Wakatipu beneath a soaring panorama of the Remarkables Mountain Range, this alpine town is surrounded by many historic, gastronomic, and scenic wonders. Take a stroll through the beautiful lakefront parks and gardens, browse through market stalls on weekends, dine in wonderful al-fresco restaurants, or ride on the 100-year-old historic Steamship - TSS Earnslaw to Walter Peak Station. Take the Queenstown Gondola up to Bob's Peak and soak up the panoramic views of the magnificent lake and mountain ranges. And after all of that, if you do want the adrenaline rush, Queenstown is known for taking your pick from the Shotover Jet, Canyon Swing, Zipline, Luge, or Heli-hike.

Queenstown Skyline Gondola Ride

Hop aboard the Skyline Gondola - the steepest cable car lift in the Southern Hemisphere! From which you can take in the awe-inspiring views of this spectacular landscape. Sit back and relax as you enjoy panoramic views of The Remarkables, Walter Peak, Cecil Peak, Coronet Peak and the magnificent Lake Wakatipu.

SUGGESTED ACTIVITY - Appellation Boutique Wine Tour

Experience a tasting journey through three of Central Otago's incredibly scenic and varying wine sub-regions; Gibbston, Bannockburn and Cromwell. Visit three boutique vineyards, tasting their unique cool climate wines and discover why the Central Otago region has become world-renowned in its own right. Indulge at a fourth vineyard restaurant for a platter-style lunch, savouring the finest and freshest produce, accompanied with a wine flight.

There will also be an opportunity to retrace history when you stroll through the charming historical settlement of Old Cromwell.

SUGGESTED ACTIVITY - Gold Heritage: Skippers Canyon Tour with Nomad Safaris

An unforgettable 4WD adventure with Nomad Safaris into the historic Skippers Canyon. This half-day tour follows the dramatic Skippers Road, carved by hand into the cliffs of the Shotover River Valley. Enjoy breathtaking views as your guide leads you to historic landmarks, including the Skippers Suspension Bridge and the restored schoolhouse, offering a glimpse into the area's rich heritage. Recognized as one of the world's most scenic roads by the British Automobile Association, this thrilling journey it is important you read and understand the risks associated with this activity. For more information see [here](#).

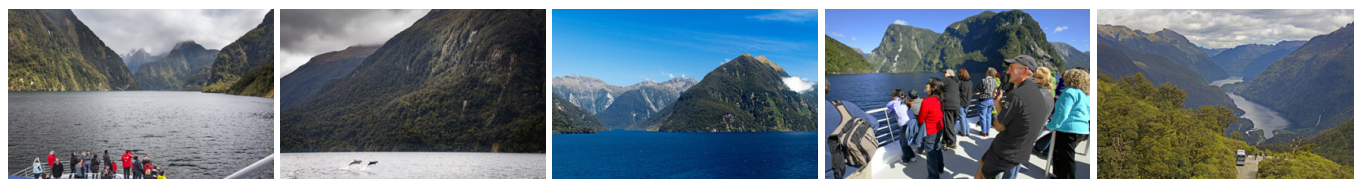
Your accommodation: The Dairy Hotel Queenstown, A Naumi Chapter

The Dairy Private Hotel – a unique blend of exquisite design, rich history and warm hospitality in the city centre. Beginning as Queenstown's original 'dairy' (corner store) in 1920, it has now transformed into an interiors masterpiece after an exquisite refurbishment that features wallpapers from British luxury interiors brand House of Hackney.

Meals included: Breakfast



Day 5



Doubtful Sound Wilderness Cruise from Queenstown with RealNZ

Journey aboard a luxury glass-roofed coach from Queenstown, travelling along Lake Wakatipu and the scenic countryside to Manapouri. From Pearl Harbour, enjoy a cruise across serene Lake Manapouri to West Arm, followed by a coach ride over the rainforest-clad Wilmot Pass with stops to admire the lush plant life and breathtaking views. At Pātea-Doubtful Sound, board the catamaran Commander Peak for a 3-hour cruise to the Tasman Sea, showcasing waterfalls, rainforests, and majestic mountains. Keep an eye out for fur seals, bottlenose dolphins, and seasonal Fiordland crested penguins. Enjoy insightful commentary and experience the tranquil 'Sound of Silence' on the return trip.

Your accommodation: The Dairy Hotel Queenstown, A Naumi Chapter

The Dairy Private Hotel – a unique blend of exquisite design, rich history and warm hospitality in the city centre. Beginning as Queenstown's original 'dairy' (corner store) in 1920, it has now transformed into an interiors masterpiece after an exquisite refurbishment that features wallpapers from British luxury interiors brand House of Hackney.

Meals included: Breakfast, Lunch



Day 6



Queenstown to Franz Josef Glacier via Wānaka

From Queenstown you'll cross the Crown Range, the highest sealed road in New Zealand to arrive in the Alpine town of Wānaka, gateway to Mt Aspiring National Park. Skirting the shores of both Lake Wanaka and Hawea, you will enter the small town of Makarora. Stop at Blue Pools for a 1-hour return walk through the native beech forest to a glacier-fed swimming hole. Continue on through the remote seaside settlement of Haast before heading up the wild West Coast highway you pass through ancient temperate rainforests while getting sneak peeks of the wild coast beaches occasionally. Keep heading North and be sure to enjoy the view of the ever-changing towering snowcapped Southern Alps Mountain Range. Fox Glacier welcomes you first, then comes your destination for the night Franz Josef township.

SUGGESTED ACTIVITY - One Hour Private Tub with Waiho Hot Tubs

Relax and unwind in the soothing comfort of fresh, warm water and aromatic wood smoke. Enjoy your own private tubs, nestled in a lush rainforest setting on New Zealand's West Coast. These wood-fired hot tubs combine the soothing comfort of warm water with the unique atmosphere of wood smoke to give you an unforgettable experience.

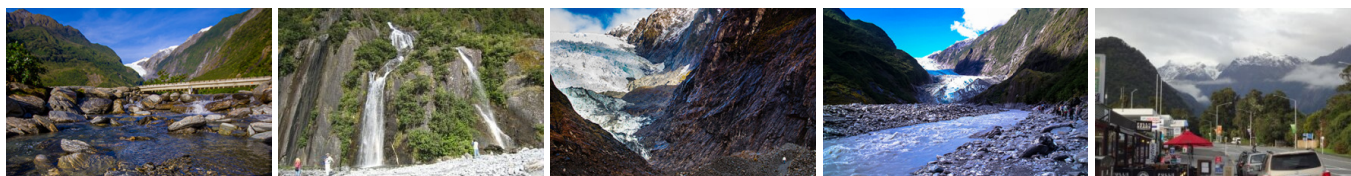
Your accommodation: Westwood Lodge

Westwood is a purpose built lodge, crafted entirely from wood and exquisitely decorated throughout. The lounge is the place to meet to watch the Southern Alps turn a soft pink in the setting sun.

Meals included: Breakfast



Day 7



Explore Franz Josef

Franz Josef is a small yet lively town in the heart of New Zealand's West Coast, best known for its spectacular 12 km-long glacier. The township is surrounded by lush, rainforest-clad mountains and has a vibrant atmosphere with plenty to explore. A variety of scenic walking trails offer incredible views of the glacier, but for a truly up-close experience, a licensed helicopter tour is the only way to set foot on the ice. Beyond the glacier, unwind in the rejuvenating Hot Pools or visit the West Coast Wildlife Centre to spot rare kiwi birds. If you're in the mood for a more relaxed day, the township is home to charming souvenir and gift shops, as well as great dining spots like SnakeBite Brewery and King Tiger. Whether you're chasing adventure or relaxation, Franz Josef is a stunning blend of wild beauty and welcoming hospitality.

Franz Josef Glacier Helihike with Franz Josef Glacier Guides

After a thrilling scenic flight, high above the rugged terrain, you will land on the glacier, ready to undertake a guided glacier hike. Your friendly guide will lead you through some of the most pristine and awe-inspiring glacial scenery in the world. Your guide will choose your route carefully as you go and, with an eye for the most spectacular ice formations, you'll soon be making your way through an extraordinary landscape of towering peaks and glistening blue ice. It is important you read and understand the risks associated with this activity prior to travel. For more information please see here.

Your accommodation: Westwood Lodge

Westwood is a purpose built lodge, crafted entirely from wood and exquisitely decorated throughout. The lounge is the place to meet to watch the Southern Alps turn a soft pink in the setting sun.

Meals included: Breakfast



Day 8



Franz Josef to Greymouth Train Station (Return Rental Car)

Head north along the mighty West Coast highway you pass through ancient temperate rainforests while getting sneak peeks of the wild coast beach occasionally. Whataroa is the next town where you can see one of the world's rarest birds, the Kōtuku - White Heron. The Kōtuku nest at the Waitangi Roto Nature Reserve, only accessible with a guided tour from October to March. The next town is Ross which is the site of an old gold mining settlement where the local information centre offers you the chance to pan for gold. Hokitika is a great place to explore craft and gift stores and head to the coast and take in the endless sea views. The Pounamu-Greenstone on offer in Hokitika is probably some of the best you will see in the country. Continue on to Greymouth, the largest town on the West Coast and the starting point for the next leg of your journey the TranzAlpine Scenic Train. Drop your rental car at the Greymouth Train Station depot located at the train station building before boarding your train to Christchurch.

TranzAlpine Scenic Train: Greymouth to Christchurch

Considered one of the world's great train journeys, the TranzAlpine Scenic Train takes you from Greymouth to Christchurch. Travel across the South Island from the west to the east coast through Arthur's Pass National Park. From the comfort of your carriage see lush beech forest, deep river valleys and the spectacular peaks of the Southern Alps. Descend to the windswept Canterbury Plains before arriving in the city of Christchurch.

Shared Transfer from Christchurch Train Station to Christchurch CBD Accommodation with Christchurch Touring Company

On arrival at the Christchurch railway station, you will be met by a driver and transferred to your Christchurch accommodation.

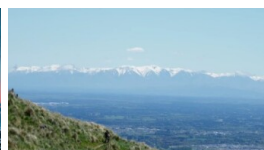
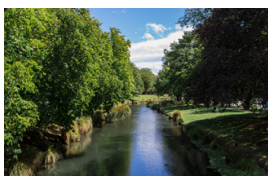
Your accommodation: Merivale Manor House

Originally built in the 1880's, Merivale Manor has been transformed into elegant motel and apartment accommodation. Less than 200 metres to central Merivale with its premier shopping, restaurants, cafes and bars.

Meals included: Breakfast



Day 9



Private Transfer from Christchurch Accommodation to Christchurch International Airport with Christchurch Touring Company

A private transfer will collect you from your accommodation and transfer you to Christchurch International Airport in time for your departing flight.

Farewell from Aotearoa / New Zealand

Bid farewell to Aotearoa / New Zealand, taking with you unforgettable memories of its breathtaking landscapes and incredible adventures. In Māori, it is said mā te wā, which is not goodbye, it is see you soon!

Tour details

Departures:	Daily
Tour type:	South Island Self Drive
Starts:	Christchurch
Finishes:	Christchurch
Tour length:	9
Accommodation:	Boutique Lodges & Hotels
Car/transport type:	

Accommodation summary

Day 1	Merivale Manor House
Day 2	Hermitage Hotel, Aoraki Wing Premium Plus
Day 3	The Dairy Hotel Queenstown, A Naumi Chapter
Day 4	The Dairy Hotel Queenstown, A Naumi Chapter
Day 5	The Dairy Hotel Queenstown, A Naumi Chapter
Day 6	Westwood Lodge
Day 7	Westwood Lodge
Day 8	Merivale Manor House